

# HUNTER GAS PIPELINE

## THE IMPORTANCE OF NATURAL GAS

More than one million homes and 33,000 businesses in New South Wales (NSW) rely on natural gas. Despite having significant undeveloped gas resources underfoot, NSW currently imports 100 per cent of its supply from interstate. With gas shortfalls predicted, Santos is planning to deliver the Narrabri Gas Project (NGP) which will allow NSW to develop its own resources for the state, helping put downward pressure on gas and electricity prices for families, businesses and manufacturers.

The NGP involves the progressive development of up to 850 gas wells on up to 425 well pads, and the construction and operation of gas processing and water treatment facilities. Santos has committed 100 per cent of Narrabri gas to the east coast domestic market, helping deliver energy security to the region. Santos is proposing to transport this gas via two underground pipelines – the Narrabri Lateral Pipeline (NLP) and the Hunter Gas Pipeline (HGP) which, once constructed, will tie-in to the existing gas transmission network near Newcastle.

## HGP PROJECT OVERVIEW

Hunter Gas Pipeline (HGP) Pty Ltd is a wholly owned subsidiary of Santos. The HGP gained planning approval from the NSW and Queensland governments for an 833-kilometre pipeline to be constructed from Wallumbilla in Queensland to Newcastle in NSW. The HGP is declared Critical State Significant Infrastructure (CSSI) by the NSW Government and was determined to be 'not a controlled action' in accordance with the EPBC Act by the Commonwealth Government.

### Santos has approval to construct the pipeline in three stages:

- Stage 1 – Construction of early and low impact works (commenced in December 2023)
- Stage 2 – Construction and operation of the Narrabri to Newcastle section (will commence once all approvals are in place)
- Stage 3 – Construction and operation of the Wallumbilla to Narrabri section

The HGP has been designed with offtake points at various regional towns along the route. Santos continues to engage with landholders, local councils and state government agencies to finalise the current pipeline alignment within the 200m approved corridor.

## PROJECT FACTS



**~413KM**

Stage 2 Narrabri  
to Hexham



**100%**

of Narrabri gas  
committed to  
domestic market



**350**

Jobs during  
construction



**6-12 MONTHS**

expected  
construction  
duration



**MATERIAL**

Epoxy coated high  
strength steel



**SIZE RANGE**

up to 550mm



**NOMINAL  
CAPACITY**

Up to 200  
terrajoules/day  
of Narrabri gas

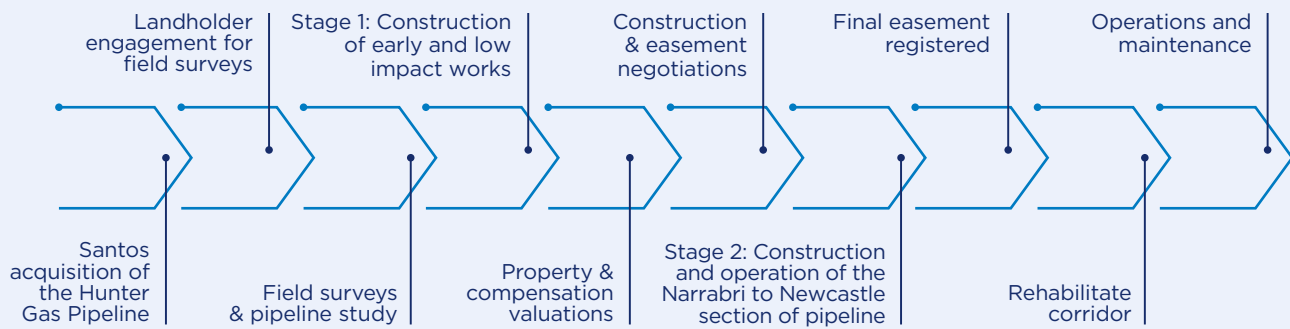


**MINIMUM DEPTH OF COVER**

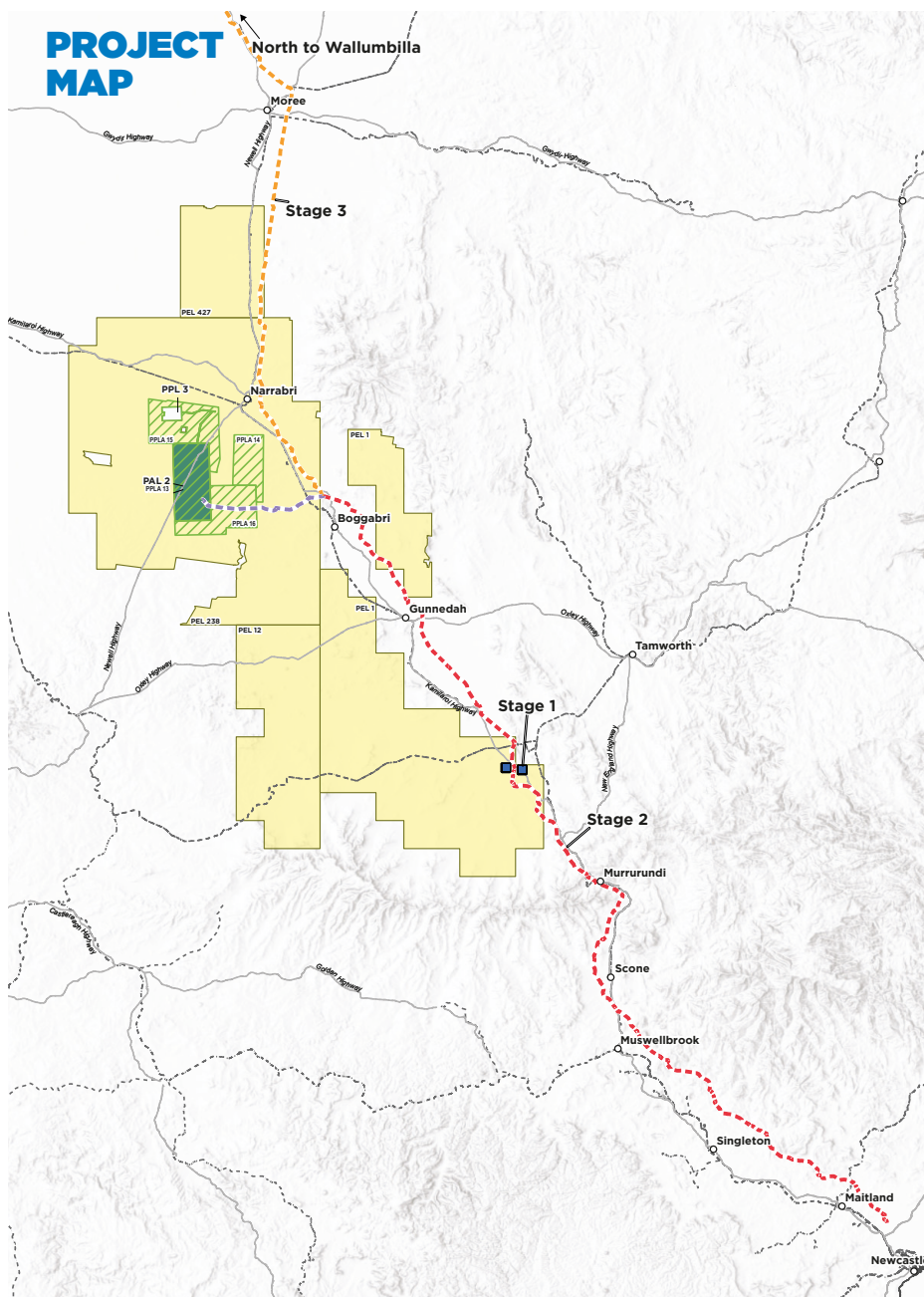
(based on AS2885 requirements)

- Typically: 900mm (minimum 750mm)
- Cropping areas: 1,200mm
- Road/rail crossings: 1,200mm

**WE ARE  
HERE**



## PROJECT MAP







**Santos**

New South Wales

## HGP Staging



### Legend

-  Stage 1 - HGP early and low impact works including laydown yards
-  Stage 2 - HGP Narrabri to Newcastle (proposed)
-  Stage 3 - HGP Narrabri to Wallumbilla (proposed)
-  Narrabri Lateral Pipeline (proposed)


○ Town

— Road

--- Railway

 Narrabri Gas Project

## Exploration and Petroleum Titles

-  Assessment Lease  
 Exploration Lease

## CONTACT

To find out more information about the project:

**Free call:**  
1300 427 546

**Email:**  
info@huntergaspipeline.com.au

**Website:**  
huntergaspipeline.com.au